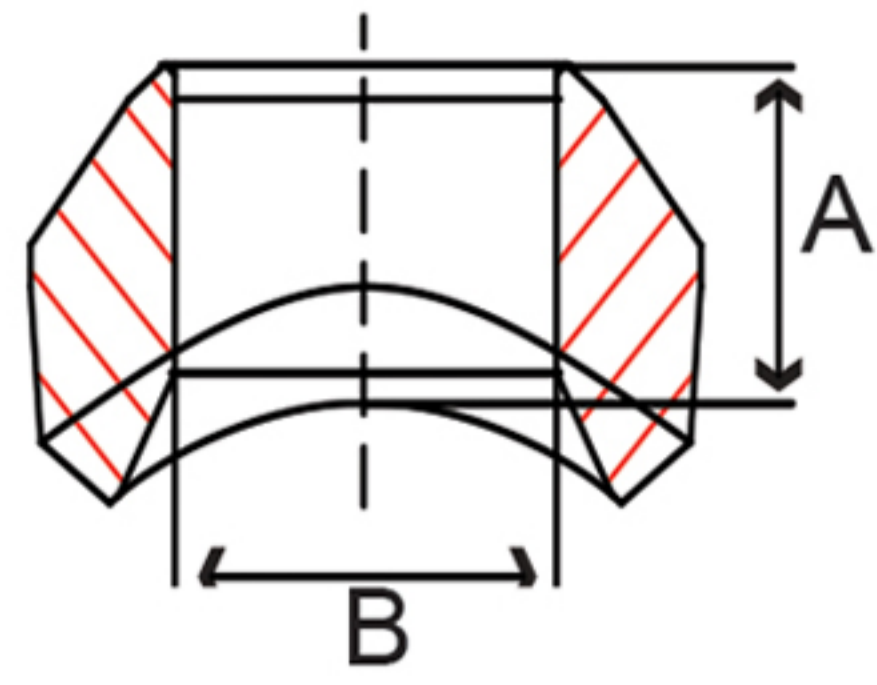


**Fig. 43W03 – Welded Outlet**



Size IN	Part Number	A IN	B IN	Master	Weight LB
1/2 x 1	43WO3004010	0.75	0.545	150	0.3
1/2 x 1-1/4 thru 36	43WO3004012360	0.75	0.545	150	0.3
3/4 x 1 thru 2	43WO3006010020	0.88	0.743	100	0.3
3/4 x 2-1/2 thru 36	43WO3006024360	0.88	0.743	100	0.3
1 x 1-1/4 thru 1-1/2	43WO3010012014	1.06	0.957	50	0.6
1 x 2 thru 36	43WO3010020360	1.06	0.957	50	0.6
1-1/4 x 1-1/2 thru 2	43WO3012014020	1.25	1.280	40	0.9
1-1/4 x 2-1/2 thru 6	43WO3012024060	1.25	1.280	40	0.9
1-1/4 x 8 thru 36	43WO3012080360	1.25	1.280	40	0.9
1-1/2 x 2 thru 3-1/2	43WO3014020034	1.31	1.502	25	1.4
1-1/2 x 4 thru 36	43WO3014040360	1.31	1.502	25	1.4
2 x 2-1/2 thru 3	43WO3020024030	1.50	1.938	15	2.3
2 x 3-1/2 thru 6	43WO3020034060	1.50	1.938	15	2.3
2 x 8 thru 36	43WO3020080360	1.50	1.938	15	2.3
2-1/2 x 5 thru 10	43WO3024050100	1.62	2.322	10	2.9
2-1/2 x 12 thru 36	43WO3024120360	1.62	2.322	10	2.3
3 x 5 thru 6	43WO3030050060	1.75	2.900	6	4.3
3 x 8 thru 14	43WO3030080140	1.75	2.900	6	4.3
3 x 16 thru 36	43WO3030160360	1.75	2.900	6	4.3
4 x 8 thru 10	43WO3040080100	2.00	3.826	3	7.1
4 x 12 thru 20	43WO3040120200	2.00	3.826	3	7.1
4 x 22 thru 36	43WO3040220360	2.00	3.826	3	7.1

All Butt Weld Outlets Have a Schedule 80 Bore